

# Medium/High Pressure Slip Table

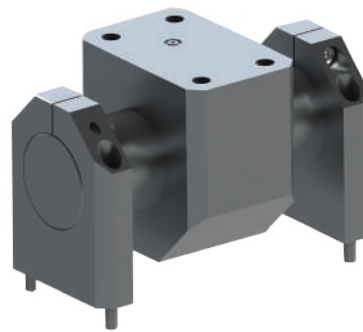
## MP series (T-typed):

- Excellent dynamic performance and parallel working performance, simple assembly;
- Bearing and anti-overturning ability are 2-3 times of V-typed bearing;
- Adopt high strength aluminum alloy and special processing technology to ensure accuracy, improve impact resistance and deformation resistance ability.



## HP series (Hydro-static type):

- Higher anti-overturning moment, suitable for large load specimen test. The more the number of hydrostatic bearings, the higher the anti-overturning moment;
- The shaft of bearing adopts ceramic plating processing which helps to improve wearing resistance and temperature resistance ability.



Thickness (mm)	Frequency (Hz)					TS50LS3-445											
		TS25WLS3-340		TS30LS4-445		TS40LS4-445		TS50LS4-445		TS60LS3-445		TS70LS3-550		TS160-650		TS300LS3-870	
Effective Mass (Al/kg)	Effective Mass (Mg/kg)	TS30-370		TS50-445		TS60-445		TS70W-445		TS80W-445		TS100-550		TS180-650		TS350IS3-870	
		TS35WLS3-340		TS60-445		TS60WLS4-445		TS70WLS3-445		TS80WLS3-445		TS120-550		TS200-650		TS400LS3-870	
Model	Dimension (mm)					TS65LS3-480				TS120LS3-550				TS200LS3-650			
		MP0808/HP0808	800x800	50	2000	50	2000	50	2000	50	2000	50	2000	—	—	—	—
108	75			112	80	120	86	118	86	141	105	—	—	—	—		
MP0909/HP0909	900x900	50	2000	50	2000	50	2000	50	2000	50	2000	—	—	—	—		
		132	92	138	96	146	103	142	101	167	122	—	—	—	—		
MP1010/HP1010	1000x1000	50	2000	50	2000	50	2000	50	2000	50	2000	—	—	—	—		
		160	110	165	115	173	122	169	120	195	142	—	—	—	—		
MP1111/HP1111	1100x1100	50	2000	50	2000	50	2000	50	2000	50	2000	—	—	—	—		
		188	129	193	135	203	142	198	140	226	162	—	—	—	—		
MP1212/HP1212	1200x1200	50	2000	50	2000	50	2000	50	2000	50	2000	50	2000	—	—		
		221	151	226	156	236	165	231	161	260	182	282	206	—	—		
MP1313/HP1313	1300x1300	50	2000	50	2000	50	2000	50	2000	50	2000	50	2000	—	—		
		256	175	262	180	272	188	266	185	296	210	318	232	—	—		
MP1414/HP1414	1400x1400	50	1600	50	1600	50	1600	50	1600	50	1600	50	2000	—	—		
		295	199	300	205	310	213	305	210	336	235	358	258	—	—		
MP1515/HP1515	1500x1500	50	1200	50	1200	50	1200	50	1200	50	1200	50	2000	55	1500		
		335	226	340	231	351	241	345	236	378	263	400	285	600	485		
MP2020/HP2020	2000x2000	—	—	—	—	—	—	—	—	60	1000	60	2000	60	1500		
		—	—	—	—	—	—	—	—	778	530	800	552	950	702		
MP2525/HP2525	2500x2500	—	—	—	—	—	—	—	—	—	—	—	—	60	1500		
		—	—	—	—	—	—	—	—	—	—	—	—	1380	1040		